

Register Today!

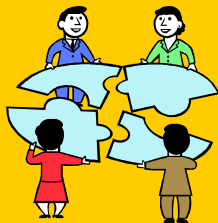
Name: _____

Address: _____

Phone Number: _____

E-mail Address: _____

Cost per phase is \$15 or if you would like to pay for all three phases in advance the cost is \$40. Please make checks payable to the Center for Rural Affairs. Meal will be provided at each session. Can't wait to see you there!



Help put the pieces together!

Contact Information

Stephanie Fritz
(402)358-3432 o4 (402)270-1070
stephanief@cfra.org

Registration for Phase I does require completion of on-line personality test. This must be completed no later than January 11th. You can get link information from Carroll Welte by calling (402) 374-2929 or email, cwelte1@unl.edu. She will send out instructions on how to complete the assessment online.



This project is funded in part by grants from the Nebraska Department of Economic Development administered by the Nebraska Rural Development Commission and from the US Department of Agriculture & Housing Services administered by The Center for Rural Affairs.

Other Sponsors include the City of Lyons, Village of Bancroft, City of Pender, Bancroft-Rosalie Public School & Pender Public School



The Center for Rural Affairs is an equal opportunity provider and employer

Youth & Adults



Learning to Lead
in
Learning to Lead
in
Logan Valley
2010



Get Involved In Your Community!

Learning to Lead Phase I

- **Understanding Personalities January 13th from 6:00-8:30** Participants will complete the Myers-Briggs personality test on-line. This is an easy-to-answer questionnaire for identifying people's natural preferences and strengths. This information becomes particularly useful in that it allows community leaders to match the strengths and talents of volunteers with the jobs and responsibilities that keep communities moving forward.
- **Leadership Styles January 20th from 6:00-8:30** Participants in this class will study different leadership styles. We will talk about examples in history of each of these types and how they have affected the decisions that have been made. Then there will be opportunities for each person to personally study their leadership style and how it is demonstrated in the work that they do.
- **Connecting Generations January 27th from 6:00-8:30** Understand generational differences. What determines generational differences and how these differences affect the workplace and community. Learn how to motivate volunteers by putting their generational talents to use.

Learning to Lead Phase II

- **Leading Effective Meetings February 10th from 6:00-8:30** Simple things can make or break an important meeting. Learn some steps good leaders take and processes they pay close attention to when planning and leading effective meetings. Learn how to apply tips and techniques for making a meeting successful and effective. Understand and learn about becoming an effective meeting facilitator.
- **Collaboration & Networking February 17th from 6:00-8:30** Community leaders have so many new ways that they can collaborate or work together to share their ideas, activities and resources both locally and regionally. By networking with tools such as blogs, wikis and social networks, leaders can engage others and stimulate ideas for future development. Learn why collaborating on the local and regional level is an important development strategy and how to do it using new information technology.
- **Conflict Resolution February 24th from 6:00-8:30** This program will cover attitudes and perceptions about conflict, techniques for managing conflict, characteristics of community conflict and interest-based problem solving.

Learning to Lead Phase III

- **Entrepreneurial & Innovative Thinking March 17th from 6:00-8:30** Entrepreneurial individuals and leaders are needed to address the complex global issues associated with the evolving knowledge economy. In order to keep up with the rapid rate of change in our increasingly globalized society, we must become more entrepreneurial as individuals and leaders.
- **Community Growth Matters March 24th from 6:00-8:30** Find out why growth is key to sustaining rural communities and how economic development professionals help grow communities. Learn what "quality of life" means to young families and how to build on it to attract new residents.
- **Leading Local Economic Development March 31st from 6:00-8:30** Leading local economic development is not for the faint of heart these days. This program looks at strategies and discusses the "nuts & bolts" of economic development.

This series of leadership programs will include three phases. Each phase will include three programs. Phase I will be held in Bancroft, Phase II will be in Pender and Phase III will be in Lyons.

Registration for Phase I does require completion of on-line personality test. This must be completed no later than January 11th. You can get link information from Carroll Welte at (402) 374-2929 or email, cwelte1@unl.edu.